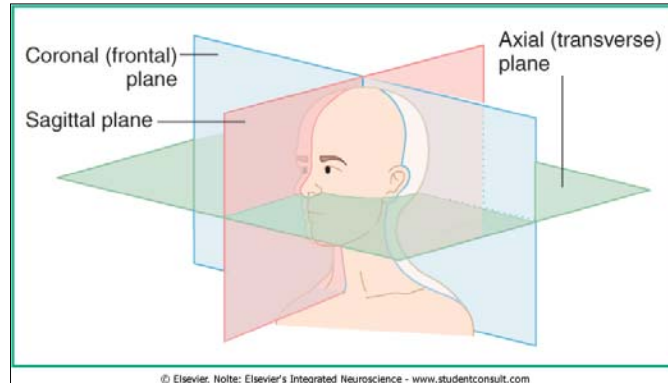
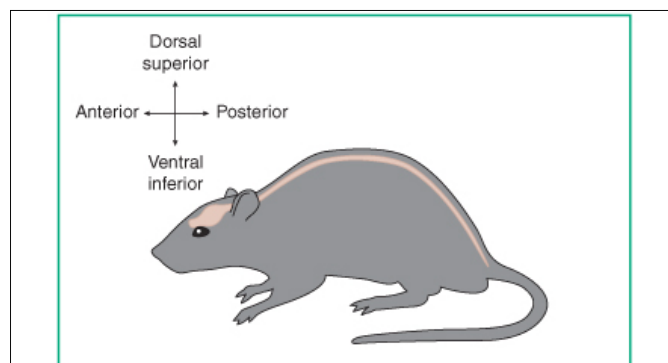




解剖学的切断面



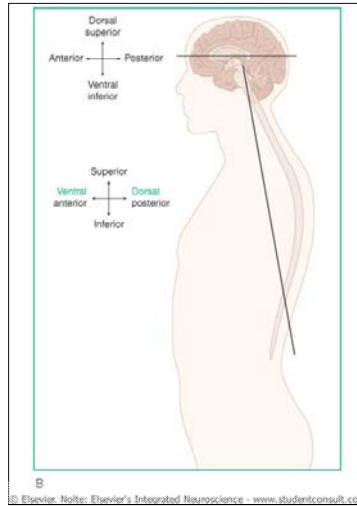
解剖学的切断面



A



解剖学的切断面

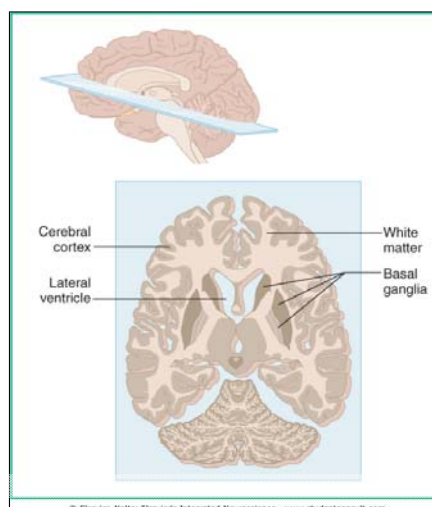


B
© Elsevier. Nolte: Elsevier's Integrated Neuroscience - www.studentconsult.com

Downloaded from: StudentConsult (on 5 October 2012 12:33 AM)
© 2005 Elsevier



大脳横断面における灰白質と白質

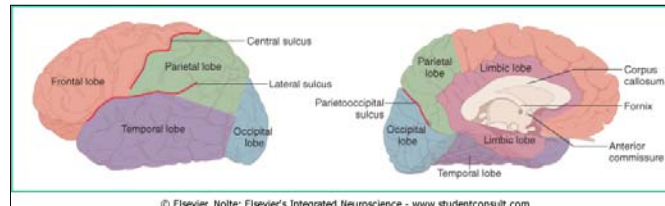


© Elsevier. Nolte: Elsevier's Integrated Neuroscience - www.studentconsult.com

Downloaded from: StudentConsult (on 5 October 2012 12:33 AM)
© 2005 Elsevier



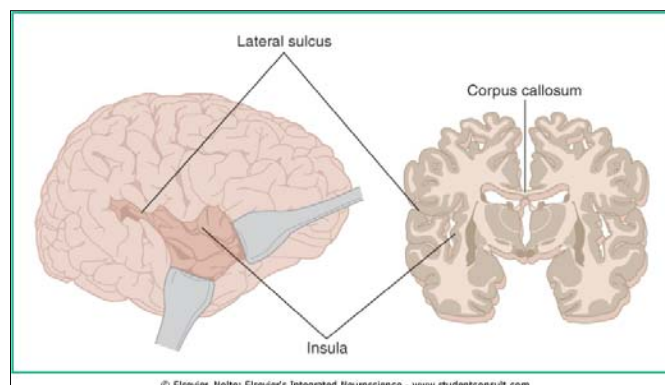
大脳半球の外側面と内側面（正中矢状断）



Downloaded from: StudentConsult (on 5 October 2012 12:33 AM)
© 2005 Elsevier



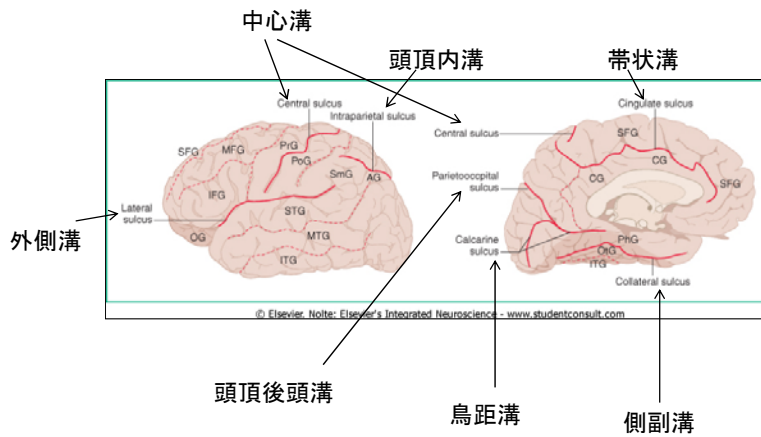
大脳冠状面



Downloaded from: StudentConsult (on 5 October 2012 12:33 AM)
© 2005 Elsevier



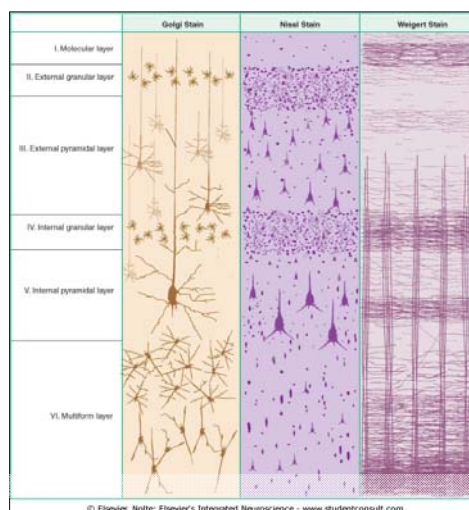
主な脳溝



Downloaded from: StudentConsult (on 5 October 2012 12:33 AM)
© 2005 Elsevier



新皮質の組織像

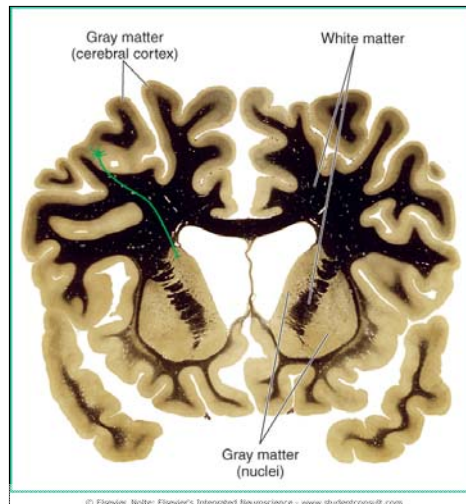


© Elsevier. Note: Elsevier's Integrated Neuroscience - www.studentconsult.com

© 2005 Elsevier



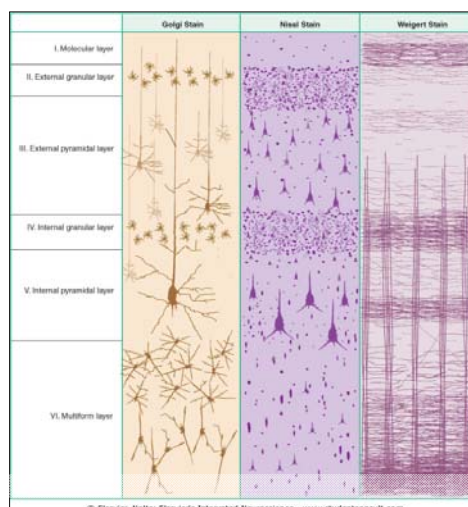
ワインゲルト染色(髄鞘染色)



Downloaded from: StudentConsult (on 1 October 2012 03:56 PM)
© 2005 Elsevier



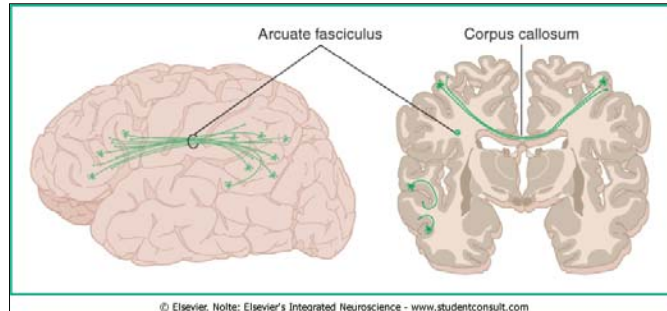
新皮質の組織像



© 2005 Elsevier



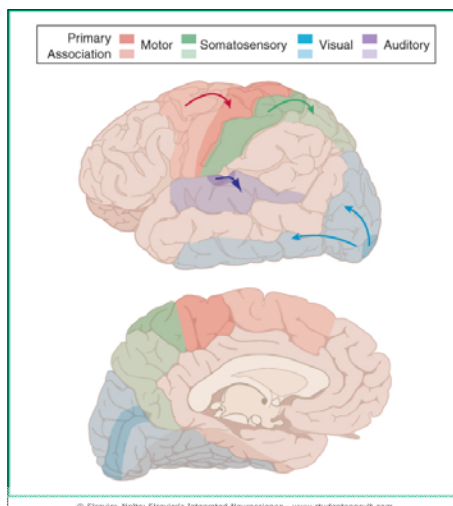
領域間連絡



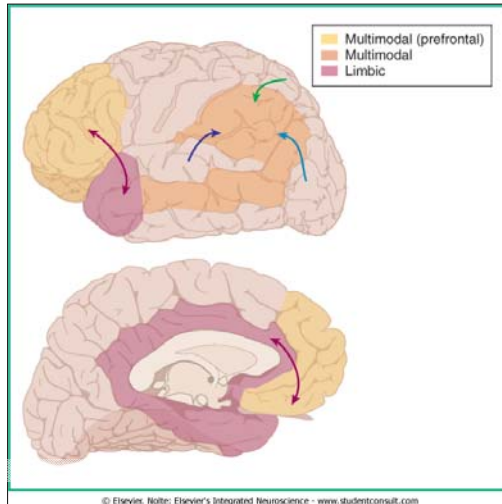
Downloaded from: StudentConsult (on 5 October 2012 12:33 AM)
© 2005 Elsevier



一次野と単一連合野



複合連合野

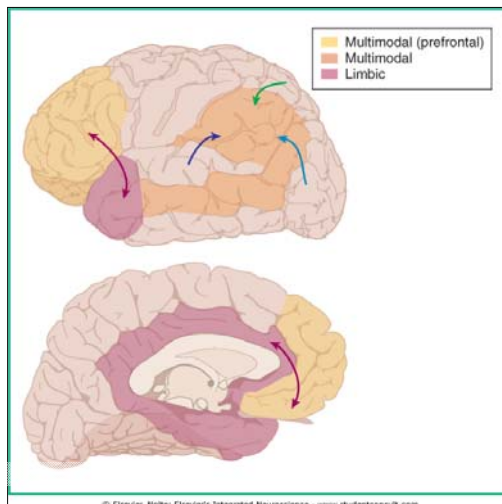


© Elsevier. Note: Elsevier's Integrated Neuroscience - www.studentconsult.com

Downloaded from: StudentConsult (on 5 October 2012 12:33 AM)
© 2005 Elsevier



複合連合野と辺縁領域

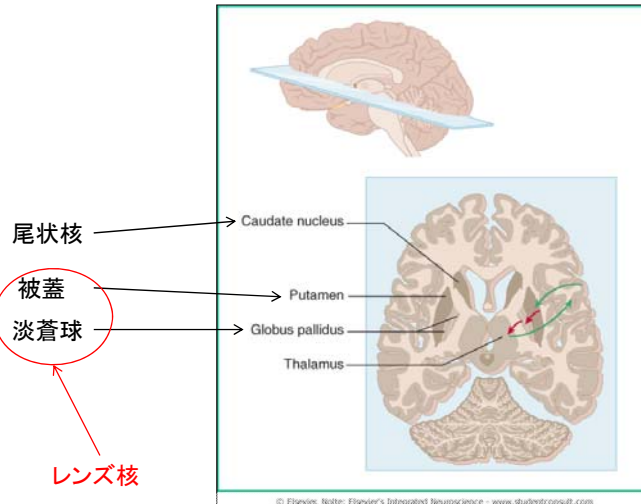


© Elsevier. Note: Elsevier's Integrated Neuroscience - www.studentconsult.com

Downloaded from: StudentConsult (on 5 October 2012 12:33 AM)
© 2005 Elsevier



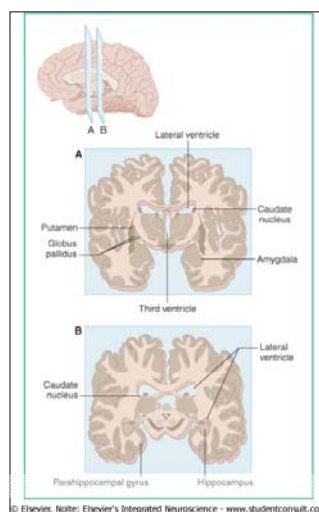
大脳基底核(前脳由来)



広義の基底核には視床下核と黒質も含まれる。



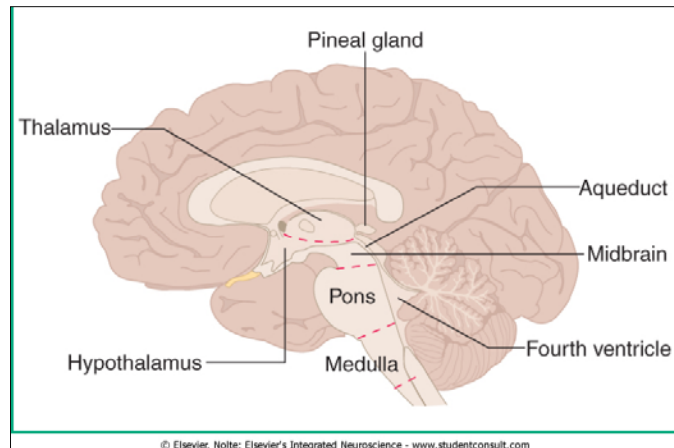
大脳基底核(冠状面)



Downloaded from: StudentConsult (on 5 October 2012 12:33 AM)
 © 2005 Elsevier



間脳と脳幹

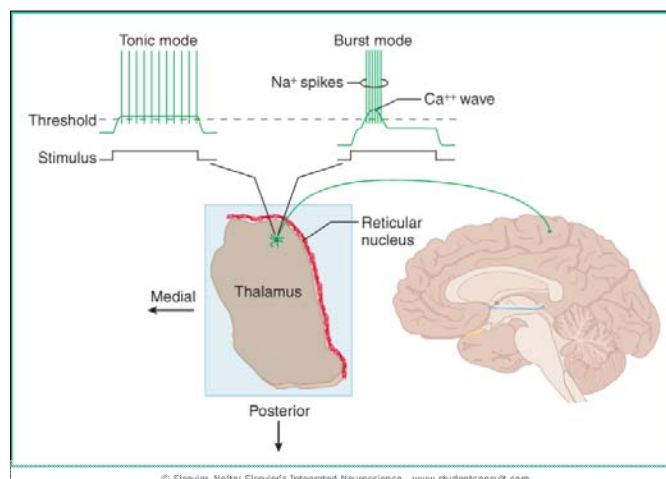


© Elsevier. Note: Elsevier's Integrated Neuroscience - www.studentconsult.com

Downloaded from: StudentConsult (on 5 October 2012 12:33 AM)
© 2005 Elsevier



視床(水平断) 単一スパイクモードとバーストモード

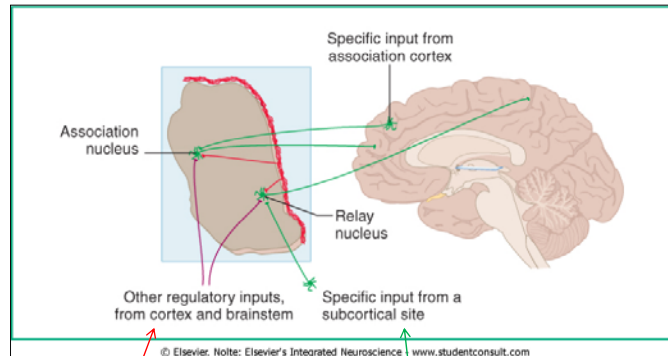


© Elsevier. Note: Elsevier's Integrated Neuroscience - www.studentconsult.com

Downloaded from: StudentConsult (on 5 October 2012 12:33 AM)
© 2005 Elsevier



視床の神経結合(中計画と連合核)

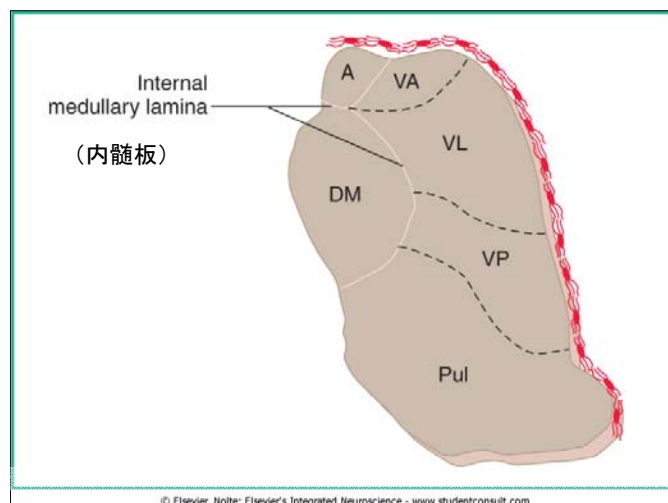


調節的入力

特異的入力



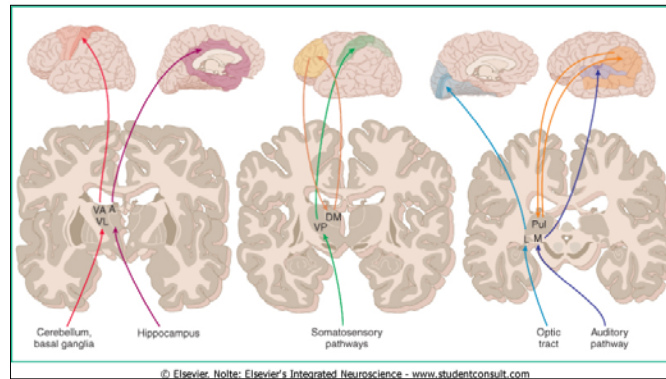
視床核



Downloaded from: StudentConsult (on 5 October 2012 12:33 AM)
© 2005 Elsevier



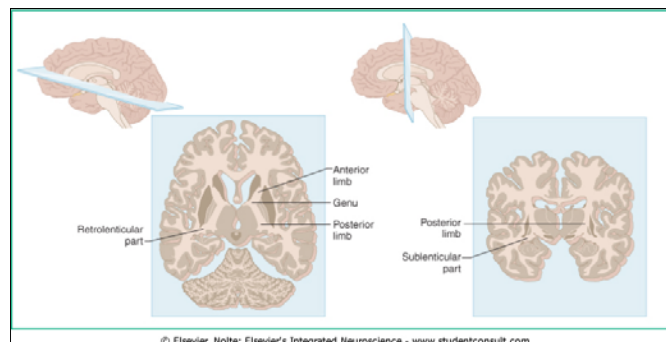
視床核の入出力



Downloaded from: StudentConsult (on 5 October 2012 12:33 AM)
© 2005 Elsevier



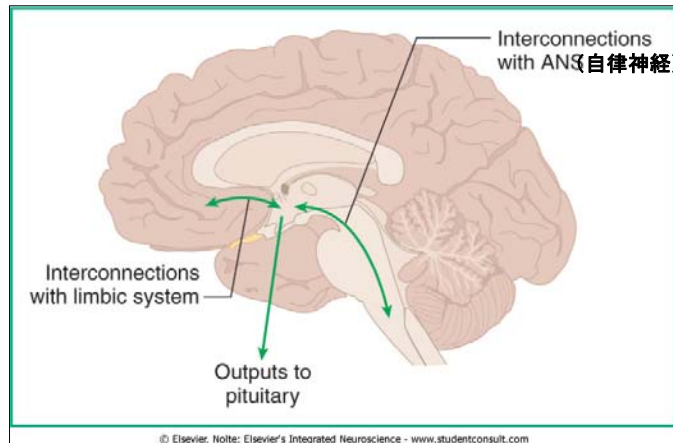
内包（水平面と冠状面）



Downloaded from: StudentConsult (on 5 October 2012 12:33 AM)
© 2005 Elsevier



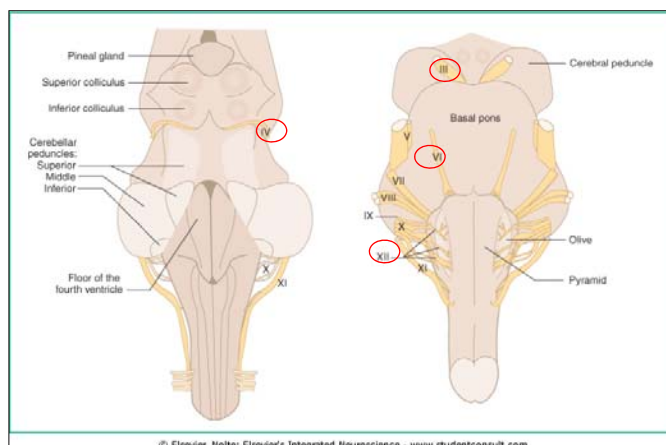
視床下部



Downloaded from: StudentConsult (on 5 October 2012 12:33 AM)
© 2005 Elsevier



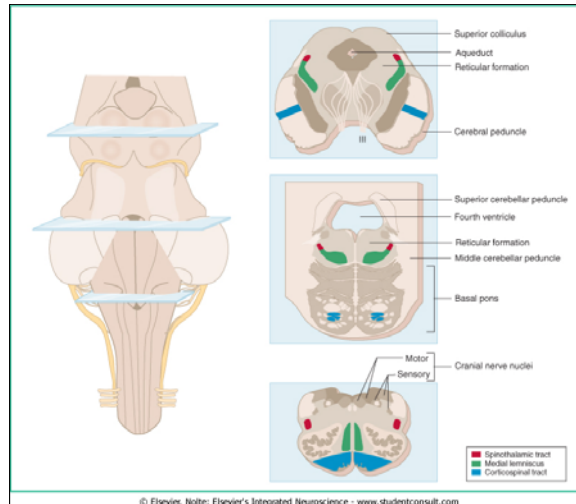
脳幹



Downloaded from: StudentConsult (on 5 October 2012 12:33 AM)
© 2005 Elsevier



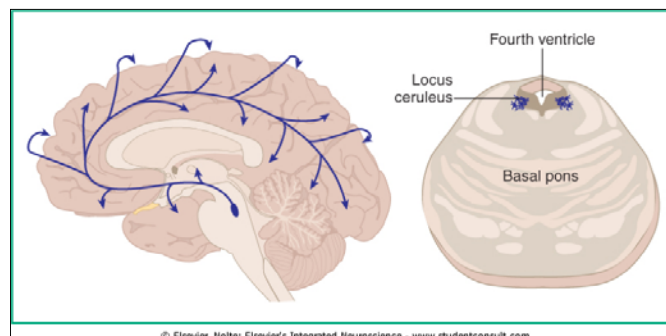
脳幹(水平面)



Downloaded from: StudentConsult (on 5 October 2012 12:33 AM)
© 2005 Elsevier



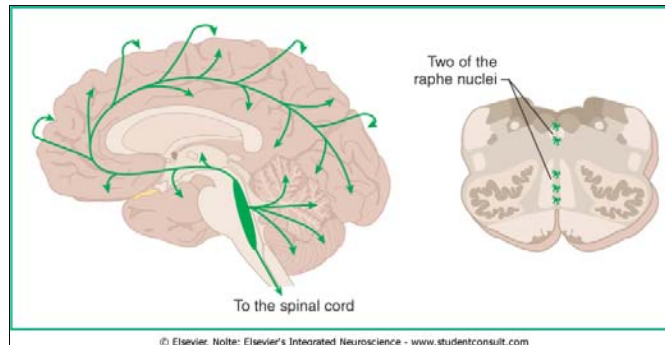
青斑核(ノルアドレナリン)



Downloaded from: StudentConsult (on 5 October 2012 12:33 AM)
© 2005 Elsevier



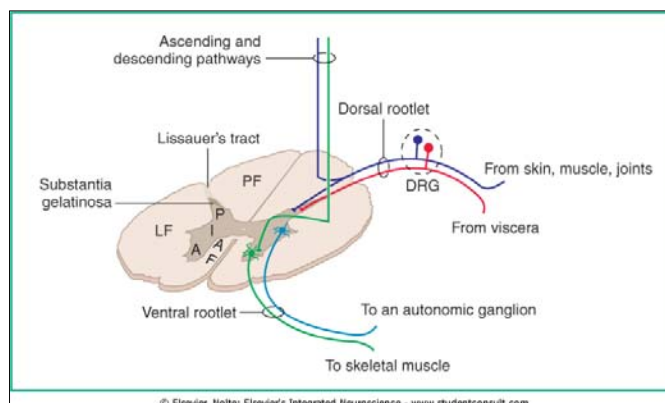
縫線核(セロトニン)



Downloaded from: StudentConsult (on 5 October 2012 12:33 AM)
© 2005 Elsevier

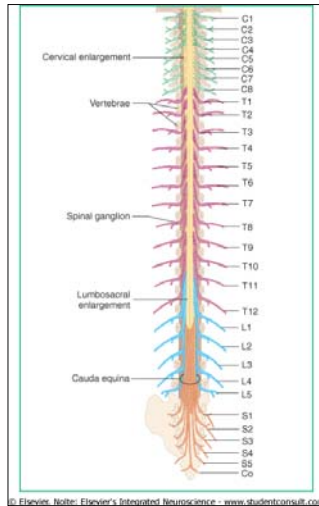


脊髄



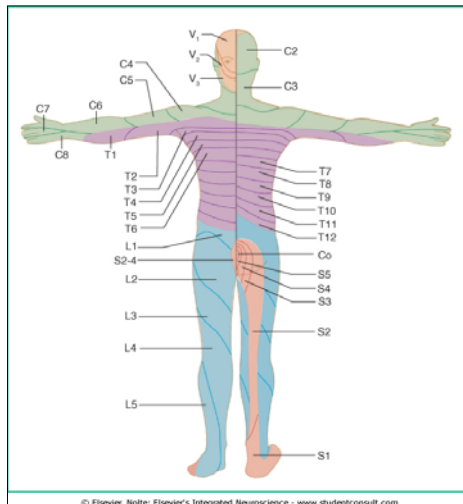
Downloaded from: StudentConsult (on 5 October 2012 12:33 AM)
© 2005 Elsevier





© Elsevier. Nolte: Elsevier's Integrated Neuroscience - www.studentconsult.com

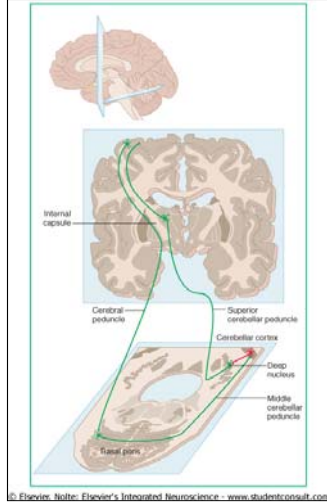
Downloaded from: StudentConsult (on 5 October 2012 12:33 AM)
© 2005 Elsevier



© Elsevier. Nolte: Elsevier's Integrated Neuroscience - www.studentconsult.com

Downloaded from: StudentConsult (on 5 October 2012 12:33 AM)
© 2005 Elsevier





© Elsevier. Adapted from: Elsevier's Integrated Neuroscience - www.studentconsult.com

